

Tamaño: 8.5 x 12 cm
Español



Cámara Inalámbrica

Marca: Lloyd's Modelo: LC-1363

Lloyd's® te ayuda a hacer tu casa inteligente
Toma el control desde una sola app y convierte tus espacios en lugares seguros, eficientes, cómodos y divertidos.



GUÍA RÁPIDA DE INSTALACIÓN

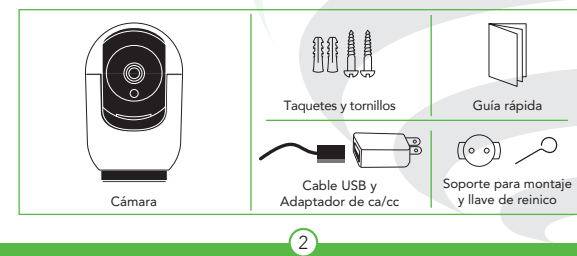
FAVOR DE LEER LA PRESENTE GUÍA DE INSTALACIÓN ANTES DE OPERAR SU PRODUCTO

*La operación de este equipo está sujeta a las siguientes dos condiciones:
(1) es posible que este equipo o dispositivo no cause interferencia perjudicial
(2) este equipo o dispositivo debe aceptar cualquier interferencia, incluyendo la que pueda causar su operación no deseada.*

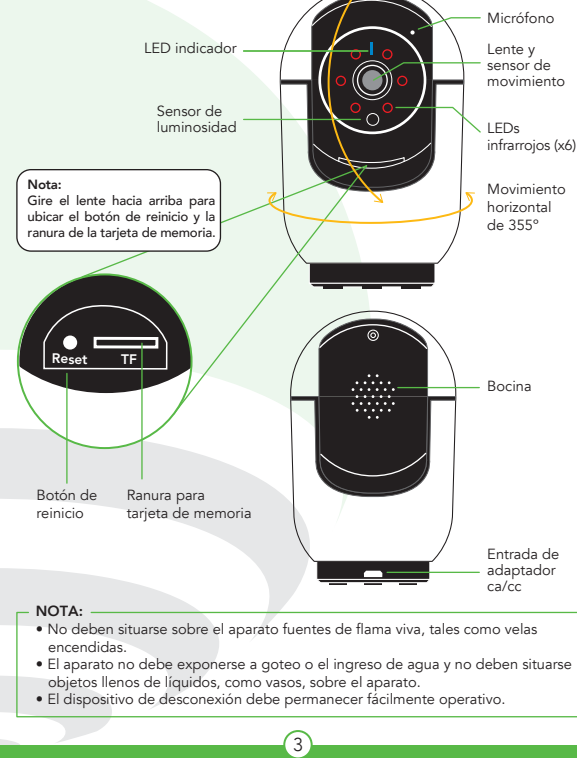
1. Características

- Monitoreo y control desde su Smartphone
- Almacenamiento en la nube por detección de movimiento (requiere suscripción)
- Soporta una tarjeta de memoria de hasta 128 GB (no incluida)
- Conexión inalámbrica Wi-Fi de 2.4 GHz / 5 GHz
- Soporta vista múltiple desde la app (hasta 4, 9 y 16 vistas simultáneas)
- Alerta por detección de movimiento
- Programación de horarios para recibir alertas por detección de movimiento
- Programación de horarios para grabación (continua o por detección de movimiento)
- Cuenta con modo de privacidad que permite apagar o encender la cámara
- Resolución: 3MP (2304*1296)
- Ángulo de visión: 120°
- Movimiento horizontal de 355° y vertical de 150°
- Función de rastreo horizontal por detección de movimiento
- Uso para interiores
- Visión nocturna de 5 metros
- Audio de dos vías
- Material: plástico ABS
- Multisusuario
- No requiere HUB
- Compatible con protocolo ONVIF
- Compatible con asistentes virtuales de Amazon Echo Show y Google Nest HUB
- Visualización en TV a través de los dispositivos Google Chromecast y Alexa Fire TV Stick con control remoto por voz
- Visualiza desde la web
- Permite la creación de rutinas que desencadenan acciones en otros productos inteligentes Lloyd's

2. Contenido



3. Diagrama



- Nota:** Gire el lente hacia arriba para ubicar el botón de reinicio y la ranura de la tarjeta de memoria.
- Nota:**
- No deben situarse sobre el aparato fuentes de flama viva, tales como velas encendidas.
 - El aparato no debe exponerse a goteo o el ingreso de agua y no deben situarse objetos llenos de líquidos, como vasos, sobre el aparato.
 - El dispositivo de desconexión debe permanecer fácilmente operativo.

4. Instalación de la cámara



ADVERTENCIA:
Para evitar daños, este aparato tiene que estar firmemente anclado al suelo / pared según las instrucciones de instalación.

Marque en la superficie la posición en la que colocará la cámara, usando como referencia los orificios localizados en el soporte para montaje. Perfore sobre las marcas, coloque los tachetes y fije el soporte con los tornillos. Finalmente coloque la cámara sobre el soporte y gire para fijarla.

Nota:
En caso de que requiera invertir la imagen, puede hacerlo de 2 formas, ya sea con la base de montaje o utilizando cinta doble cara (no incluida).

5. Antes de comenzar



6. Registro y acceso



7. Añadir dispositivo

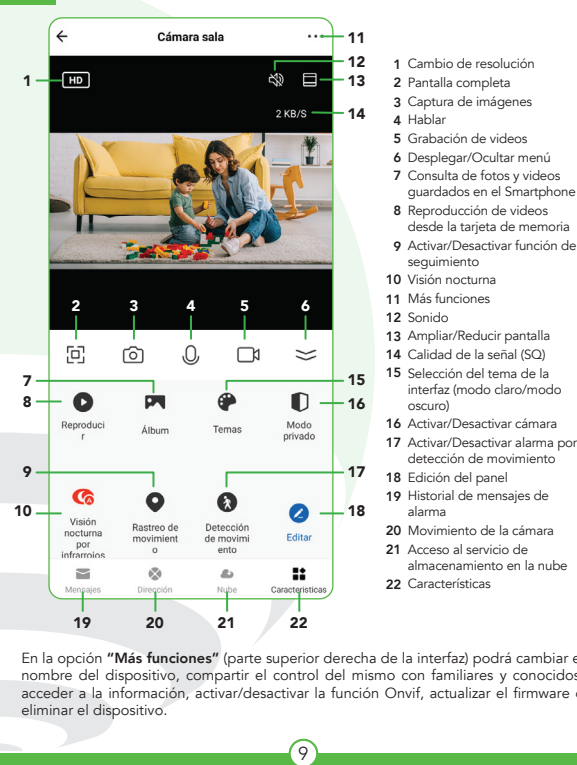


Una vez configurado el dispositivo, si lo desea, puede modificar el nombre (8), por último, haga clic en "Finalizado" (9).

Nota:
Asegúrese de que la contraseña Wi-Fi que ingrese sea la correcta y de que el dispositivo esté cerca del módem durante el proceso.

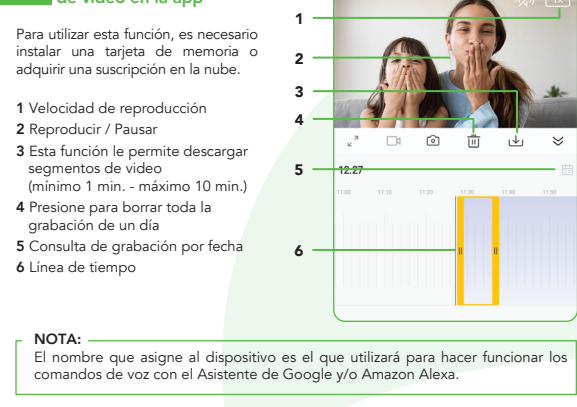
Al concluir la configuración, busque y seleccione la cámara en la lista de dispositivos (10) para poder monitorearla y controlarla a través de la app desde donde se encuentre, sólo se requiere conexión a internet.

8. Control del dispositivo



En la opción "Más funciones" (parte superior derecha de la interfaz) podrá cambiar el nombre del dispositivo, compartir el control del mismo con familiares y conocidos, acceder a la información, activar/desactivar la función Onvif, actualizar el firmware o eliminar el dispositivo.

9. Funciones de reproducción de video en la app



Nota:
El nombre que asigne al dispositivo es el que utilizará para hacer funcionar los comandos de voz con el Asistente de Google y/o Amazon Alexa.

10. Compatible con protocolo ONVIF

Puede integrar esta cámara de 3MP a diferentes equipos de videovigilancia como NVR's y DVR's híbridos de forma sencilla. Para activar/desactivar esta función, desde la app vaya a "Más funciones", luego haga clic en Onvif y habilite o deshabilite el interruptor según lo requiera.

Puerto: 10000

Nota:
En caso de requerir una contraseña puede usar el usuario: admin y la contraseña: admin

11. Función WebRTC



12. Asistente de Google y Amazon Alexa



13. Preguntas frecuentes

Cómo conectar a Amazon Alexa

1. Descargue e ingrese a la app Amazon Alexa, previamente configurada con su cuenta de correo electrónico y su asistente virtual.
2. Haga clic en la opción "Skills y juegos", luego, en la barra de búsqueda escriba Lloyd's Smart. Cuando obtenga el icono, haga clic en el mismo. Posteriormente, presione el botón "Activar para usar".
3. Ingrese su cuenta de Lloyd's Smart, luego haga clic en "Vincular ahora" y por último en "Autorizar". Obtendrá el mensaje "Enlazó correctamente", haga clic en "Cerrar" y espere unos segundos.
4. Haga clic en "Detectar dispositivos" para encontrar los dispositivos inteligentes. Ahora ya puede solicitar a su asistente controlarlos mediante comandos de voz.

Nota:
Si lo desea, puede renombrar los dispositivos desde Lloyd's Smart para controlarlos con comandos de voz. Cada vez que renombre los dispositivos, solicite a su asistente lo siguiente: "Hey Google, sincroniza dispositivos" o actualice desde la app Google Home.

Estos son algunos ejemplos de comandos de voz que puede utilizar:

- "Alexa, muestra cámara sala."
- "Alexa, muestra cámara niños."

* Visualiza en TV (se requiere Google Chromecast) o en el asistente Google Nest Hub

* Google y Chromecast son marcas de Google LLC. Requiere un televisor compatible con un puerto HDMI y un dispositivo móvil compatible. Obtén más información en g.co/cast/req.

14. Especificaciones eléctricas

Cámara inalámbrica X 2: 5 Vcc 1 000 mA
Adaptador de ca/cc X 2:
Entrada: 100-240 V- 50/60 Hz 0.25 A Max.
Salida: 5 Vcc 1 000 mA

IMPORTADOR: ZUTTO TECHNOLOGIES, S. A. DE C. V.
Av. Ejército Nacional No. 505 Interior 1602, Col. Granada Miguel Hidalgo, Ciudad de México, México C.P. 11520
Teléfono: 55 68447575 R.F.C.: ZTE161017KT6

lloydscorp.com

Size: 8.5 x 12 cm
English



Wireless camera

Brand: Lloyd's Model: LC-1363

Lloyd's® helps you make your home a smart home
Take control from one single app and transform your spaces into safe, efficient, comfortable and fun places.



INSTALLATION GUIDE

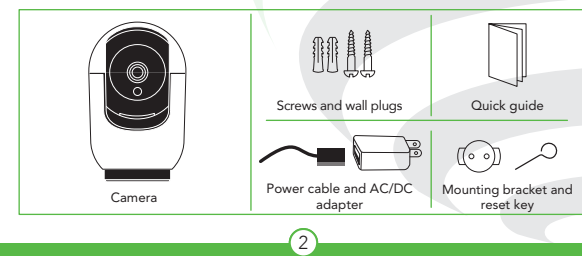
PLEASE READ THE INSTALLATION GUIDE BEFORE OPERATING THE PRODUCT

*Operation is subject to two conditions:
1. this device may not cause harmful interference.
2. This device must accept any interference, including interference that may be caused by undesired operation.

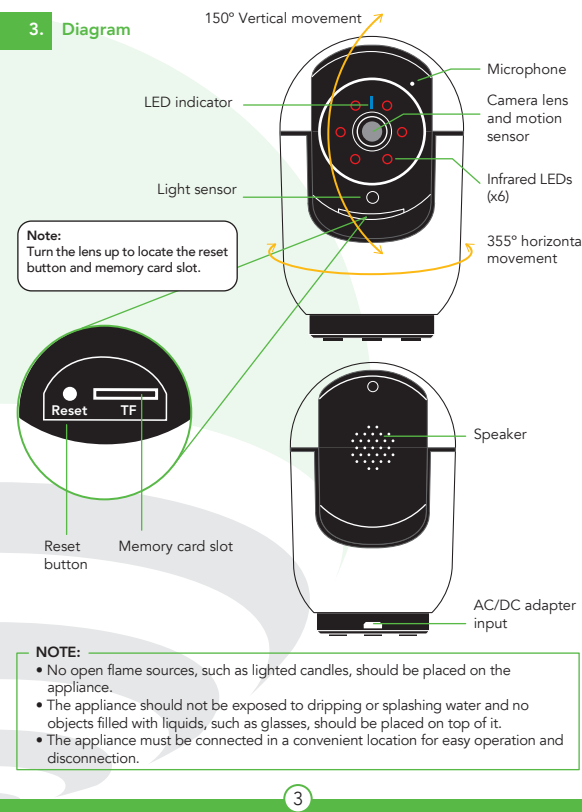
1. Characteristics

- Monitoring and control from your smartphone
- Cloud storage by motion detection (subscription required)
- Supports a memory card up to 128 GB (not included)
- 2.4 GHz / 5 GHz Wi-Fi connectivity
- Supports multiple views from the app (up to 4, 9 and 16 simultaneous views)
- Alerts when motion is detected
- Setup schedules to receive alerts when motion is detected
- Setup recording schedules (continuous recording or when motion is detected)
- Features privacy mode that allows you to turn on or off the camera
- 3MP resolution (2304*1296)
- Viewing angle: 120°
- Horizontal movement of 355° and vertical of 150°
- Features horizontal tracking function when motion is detected
- Indoor use
- Night vision of 5 meters
- Two-way audio
- Material: ABS plastic
- Multi-user
- No HUB required
- Compatible with ONVIF protocol
- Compatible with Amazon Echo Show and Google Nest HUB virtual assistants
- Watch on TV through Google Chromecast and Alexa Fire TV Stick devices with voice remote control
- Watch from the web
- Allows the creation of routines that trigger actions on other Lloyd's smart products

2. Contents



3. Diagram



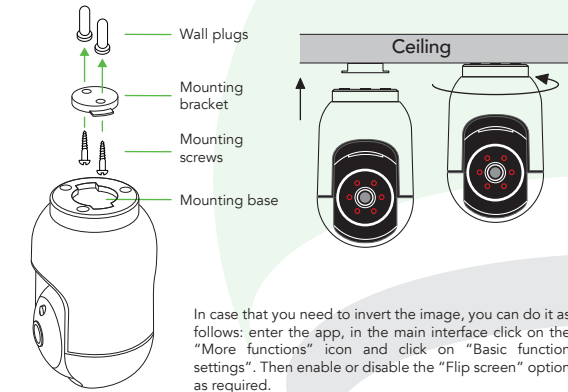
- NOTE:**
- No open flame sources, such as lighted candles, should be placed on the appliance.
 - The appliance should not be exposed to dripping or splashing water and no objects filled with liquids, such as glasses, should be placed on top of it.
 - The appliance must be connected in a convenient location for easy operation and disconnection.

4. Camera installation

WARNING:
To avoid damage, this appliance must be firmly anchored to the floor / wall according to the installation instructions.

4. Camera installation

Mark on the surface the position where the camera will be placed, using the holes located in the mounting bracket as a reference. Drill over the marks, place the anchors and secure the bracket with the screws. Finally, place the camera on the bracket and rotate to secure it.



NOTE:
To fix the camera on a flat surface, you can do it in 2 ways, either with the mounting base or using double-sided tape (not included).

5. Before getting started

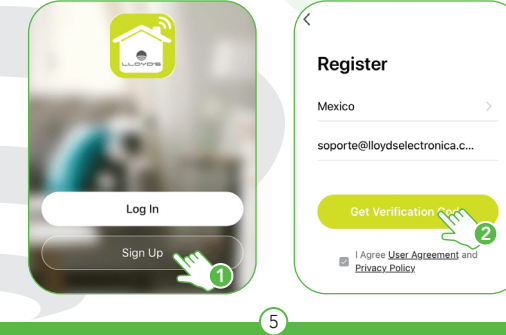
Make sure your smartphone has iOS 11.0 or higher or Android™ 5.0 or higher. Check your network and make sure you are connected to a 2.4 / 5 GHz Wi-Fi channel.

Download the Lloyd's Smart app from the App Store or on Google Play or scan the following QR code with your smartphone.

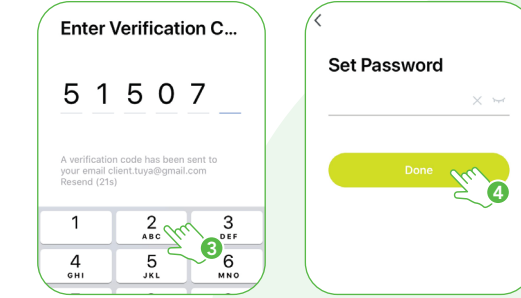


6. Registration and access

Open the Lloyd's Smart app. To register, click on "Sign Up" (1), to continue, click "Agree," choose your country and enter an email address, then click "Get Verification Code" (2).

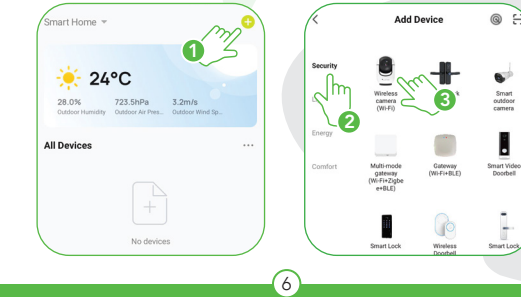


Enter the code sent to your email (check inbox or spam) (3), set a password, and click "Done" (4). Or log in directly if you already have an account.

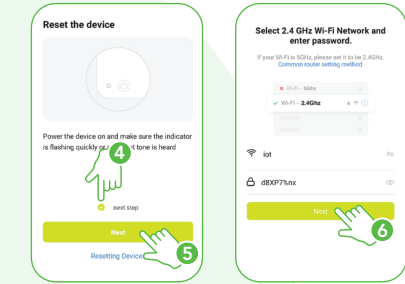


7. Add device

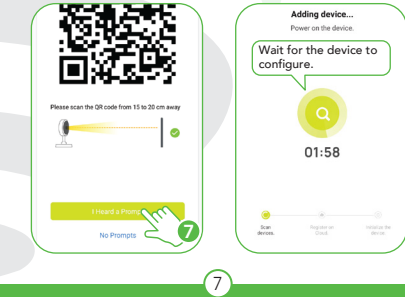
Start the Lloyd's Smart app on your smartphone, select "+" (upper right corner) (1), choose the type of device that you want to add, in this case, go to "Security" (2), then select "Wireless camera (Wi-Fi)" (3).



Connect the camera to a power outlet and wait for a moment, then press the reset button for 5 seconds, you will hear "restore factory settings" followed by "camera start." The device will make a sound, then you will hear "please config network." Confirm in the app (4) and click on "Next" (5). Enter your Wi-Fi network information and password, then click "Next" (6).



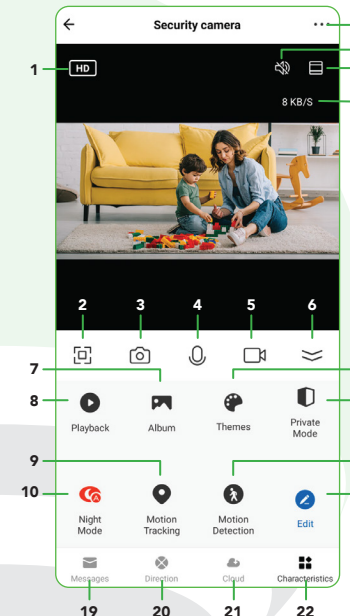
Place the camera between 15 and 20 cm in front of your smartphone to scan the QR code and click on "I Heard a Prompt" (7) once you hear it.



Once the device is configured, you can change the name (8). Finally, click on "Done" (9).

NOTE:
Make sure that the Wi-Fi password you enter is correct and that the device is close to the modem during the process.

8. Device control



In "More functions" (interface upper right corner), you will be able to rename the device, share control of it with family and acquaintances, access information, enable/disable Onvif function, update the firmware or delete the device.

9. Video playback functions in the app

To use this function, it is necessary to install a memory card or acquire a Cloud subscription.

- Playback speed
- Play / Pause
- This function allows you to download video segments. (minimum 1 min. - max. 10 min.)
- Press to erase the whole recording for one day
- Recordings query by date
- Timeline

NOTE:
The name that you assign to the device will be the one that you use with your Alexa or Google Assistant-enabled device for voice control.

10. Compatible with ONVIF protocol

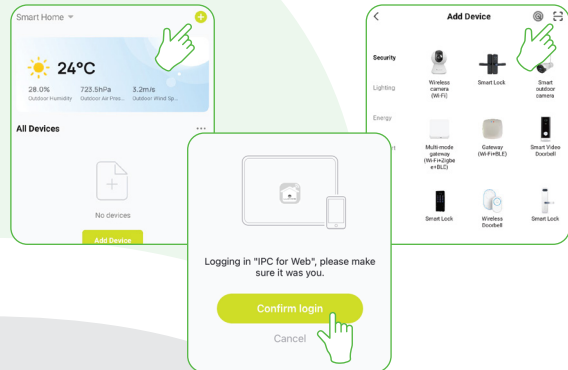
You can easily link this 3MP camera to different surveillance equipments such as hybrid NVRs or DVRs. To enable/disable this function, from the app go to "More functions", then click on Onvif and enable/disable the switch according to the needs.

Port: 10000

NOTE:
If a password is required, you can use the user: admin and password: admin.

11. WebRTC function

To monitor the cameras from the web, access the following link: <https://pc-us.smartlife.me/login>
You will get a QR code that you will have to scan with your smartphone's camera from the Lloyd's Smart app and confirm the login.



12. How to configure with Siri Shortcuts

Lloyd's smart products are compatible with Siri Shortcuts through routines created from the app. For configuration details, scan the following QR code with your smartphone:

Make sure your smartphone has iOS 12 or higher.



13. Google Assistant and Amazon Alexa

How to connect to Google Assistant

- Download and open the Google Home app, previously configured with your Gmail account and your Google Assistant-enabled device.
- Click on the "+" icon, choose "Set up Device," then in the "Works with Google" section, click on the search bar and type in Lloyd's Smart. When you get the icon, click on it. Enter your Lloyd's Smart account and click on "Link now." Then press on "Authorize" and wait a few seconds.
- Once you have linked Lloyd's Smart, the devices added to your account will be displayed, click on "X" (top left corner) and return to the main screen. Now you can control your Lloyd's Smart devices using just your voice with Google.

NOTE:
You can rename the devices from the Lloyd's Smart app to control them with voice commands. Every time you rename the devices, say: "Hey Google, sync devices" or update from the Google Home app.

Try saying "Hey Google" followed by one of the following commands:

"Hey Google, show me the living room camera"
"Hey Google, show me the bedroom camera"

* Watch on TV (Google Chromecast required) or Google Nest HUB assistant

*Google and Chromecast are trademarks of Google LLC. Requires a compatible TV with an HDMI port and a compatible mobile device. Learn more at g.co/cast/req.

How to connect to Amazon Alexa

- Download and access the Amazon Alexa app, previously configured with your email account and your virtual assistant.
- Click on the option "Skills & games", then in the search bar type Lloyd's Smart. When you get the icon, click on it. Then press the "Activate to use" button.

- Enter your Lloyd's Smart account and click on "Link Now" and finally "Authorize". You will get the message "Linked successfully", click on "Close" and wait a few seconds.
- Click "Detect devices" to find the smart devices. Now you can ask your assistant to control them by voice commands.

NOTE:
You can rename the devices from the Lloyd's Smart app to control them with voice commands. Every time you rename the devices, say: "Alexa, sync devices" or update from the Amazon Alexa app.

Voice command examples:

"Alexa, show me the living room camera"
"Alexa, show me the bedroom camera"

* Watch on TV (Alexa Fire TV Stick with voice remote control required) or on Amazon Echo Show assistant

NOTE:
The Google Home and Amazon Alexa apps are constantly being updated, for more information consult their assistant manuals.

14. Frequently asked questions

- Q:** Can adding devices repeatedly cause them to fail?
A: If a device has connection problems, it is recommended to reboot it and try adding it again.
- Q:** The device does not display images correctly.
A: Verify that your Wi-Fi network is working. If this does not solve the problem, restart the device, and add it again.

Q: How can I change the device to another modem?
A: First, reboot the device and then delete it from the app. Then configure it again from the app.

Q: Why don't I get notifications on my smartphone?
A: Make sure the notification function is active on your smartphone.

Q: Why does the device not recognize the memory card?
A: If a power failure occurred, it is recommended to reinsert the memory card. Please consider that the memory card should be formatted in FAT32.

Usage warnings:
Please keep the camera out of metal spaces or blocked by furniture or microwave ovens that obstruct sound, video, and data signals. Try to install it close to the Wi-Fi coverage area of your home or office.

15. Electrical specifications

Wireless camera X: 2: 5 Vdc 1 000 mA
AC/DC adapter: X: 2:
Input: 100-240 V - 50/60 Hz 0,25 A Max.
Output: 5 Vdc 1 000 mA

IMPORTED BY:
ZUTTO TECHNOLOGIES, S. A. DE C. V.
Av. Ejército Nacional No. 505 Interior 1602, Col. Granada Miguel Hidalgo,
Ciudad de México, México C. P. 11520
Phone: 55 68447575 - R.F.C.: ZTE161017KT6

lloydscorp.com

8

9

10

11

12

13

14